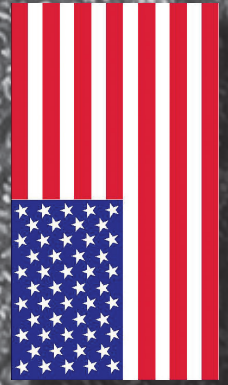


METER BOX RINGS & COVERS



*Quality American Made Products
Since 1946*

MUNICIPAL CASTINGS

2026 Catalog

**SWEETWATER
TENNESSEE**

MADE IN

METER BOX RINGS & COVERS

Double Yoke Bars	NEW
Cast Iron Yoke Bars	NEW
Yoke Bars with Prongs	NEW
Non-Recessed Meter Box Rings & Covers	C-1, C-2
Recessed Meter Box Rings & Covers	C-3, C-4
“W” Double Meter Frame & Cover	C-5
Spiked Meter Box Rings and Covers	C-6
Non-Recessed Rings and Covers	C-7
Larger Opening Meter Box Rings and Covers	C-8
Hook Meter Box Rings and Covers	C-9
Elevator Rings	C-9
Touch Read Plug	C-9
Meter Box Rings Only	C-10
Non-Recessed Meter Box Covers Only	C-11, C-12
Recessed Meter Box Cover Only	C-13, C-14
Plastic Meter Box Covers	C-15 to C-18
Monitor Rings and Covers	C-19, C-20
Expander Rings	C-20
Pit Rings and Covers	C-21
Flat Pitsetter Covers	C-21
Round Flat Water Meter Lids	C-22
Bell Rings and Cover	C-22
Rectangular Meter Lids	C-23 to C-25
Oval Water Meter Lids	C-26



Vestal Pentagon Bolts are made in the sizes shown above. The small size ($27/32$) is known as the standard or small bolt (SN). The large size ($1-1/32$) is known as the large bolt (LN). Please specify size preference when ordering.

Lifter Worm Lock - All locking lids feature an unique “worm” type lock. The lock has a hard cast iron nut that rotates and applies a screw-jack action between the lid and cover to break any seal of ice or dirt. The bolt is constructed of forged silicon bronze and features a pentagon bolt head. This bolt acts as a lifter handle for the lid for easy opening and closing.

Special Name Lids - Vestal Manufacturing owns and operates its own foundry, which gives us the ability to put custom names on many of the cast iron rings and covers that we produce. This could be either the name of a distributor, water district or municipality using the product. Contact Vestal or your local sales representative for more information.

Touch Read Holes - Many Vestal covers can be ordered with a 2” hole in the lid for placement of a touch reading device. These lids are identified by the letters “TR” after the model number. Lids with two touch read holes are identified by “2TR”. Please specify when ordering if you want your lids to have these features.

Recessed Touch Read Holes - Vestal now offers many lids with 4” and 7” recessed touch read holes. These lids are identified by the letters RTR after the model number. Lids with two touch read holes are identified by 2RTR.



Meter Setting

Double Yoke Bars



Model No.	Meter Size	Bar Width	Standard Package		Vestal No.
			Quantity	Wt. Lbs.	
D-58	5/8"	7"	1	7 lbs.	32-172
D-5834	5/8" x 3/4"	7"	1	8 lbs.	32-173
D-34	3/4"	7"	1	9 lbs.	32-174
D-1	1"	9"	1	15 lbs.	32-175



Vestal Manufacturing Enterprises, Inc.
P.O. Box 420 • Sweetwater, TN 37874
Phone: 800-456-9562 • Fax: 423-337-2003
www.vestalmfg.com





Cast Iron Yoke Bars



Model No.	Meter Size	Standard Package		Vestal No.
		Quantity	Wt. Lbs.	
V-58	5/8"	10	38	32-164
V-5834	5/8" x 3/4"	10	41	32-165
V-34	3/4"	10	46	32-166
V-1	1"	6	46	32-167



Vestal Manufacturing Enterprises, Inc.
P.O. Box 420 • Sweetwater, TN 37874
Phone: 800-456-9562 • Fax: 423-337-2003
www.vestalmfg.com





Yoke Bars with Prongs



Model No.	Meter Size	Number of Prongs	Standard Package		Vestal No.
			Quantity	Wt. Lbs.	
V-58P	5/8"	3	10	41	32-168
V-5834P	5/8" x 3/4"	3	10	44	32-169
V-34P	3/4"	3	10	49	32-170
V-1P	1"	1	6	49	32-171



Vestal Manufacturing Enterprises, Inc.
P.O. Box 420 • Sweetwater, TN 37874
Phone: 800-456-9562 • Fax: 423-337-2003
www.vestalmfg.com





NON-RECESSED CAST IRON METER BOX RINGS & COVERS*

Part Code	Model #	Description	Tile Size	Bolt	Lid	Wt.
32-036	RMC-15	Non-Locking R&C	15	N/A	11.5	29
32-033	RMC-15L W/SN	Locking R&C	15	27/32	11.5	29
32-064	RMC-15L W/LN	Locking R&C	15	1-1/32	11.5	29
32-236	RMC-15 W/TR	Non-Locking R&C, Touch Read	15	N/A	11.5	29
32-233	RMC-15L W/SN W/TR	Locking R&C, Touch Read	15	27/32	11.5	29
32-264	RMC-15L W/LN W/TR	Locking R&C, Touch Read	15	1-1/32	11.5	29
32-340	RMC-15 W/2TR	Non-Locking R&C w/ 2 Touch Read	15	N/A	11.5	29
32-345	RMC-15L W/SN W/2TR	Locking R&C w/ 2 Touch Read	15	27/32	11.5	29
32-346	RMC-15L W/LN W/2TR	Locking R&C w/ 2 Touch Read	15	1-1/32	11.5	29

Part Code	Model #	Description	Tile Size	Bolt	Lid	Wt.
32-022	RMC-18	Non-Locking R&C	18	N/A	11.5	32
32-023	RMC-18L W/SN	Locking R&C	18	27/32	11.5	32
32-061	RMC-18L W/LN	Locking R&C	18	1-1/32	11.5	32
32-222	RMC-18 W/TR	Non-Locking R&C, Touch Read	18	N/A	11.5	32
32-223	RMC-18L W/SN W/TR	Locking R&C, Touch Read	18	27/32	11.5	32
32-261	RMC-18L W/LN W/TR	Locking R&C, Touch Read	18	1-1/32	11.5	32
32-349	RMC-18 W/2TR	Non-Locking R&C w/ 2 Touch Read	18	N/A	11.5	32
32-354	RMC-18L W/SN W/2TR	Locking R&C w/ 2 Touch Read	18	27/32	11.5	32
32-355	RMC-18L W/LN W/2TR	Locking R&C w/ 2 Touch Read	18	1-1/32	11.5	32

Part Code	Model #	Description	Tile Size	Bolt	Lid	Wt.
32-025	RMC-20	Non-Locking R&C	20	N/A	11.5	33
32-026	RMC-20L W/SN	Locking R&C	20	27/32	11.5	33
32-062	RMC-20L W/LN	Locking R&C	20	1-1/32	11.5	33
32-225	RMC-20 W/TR	Non-Locking R&C, Touch Read	20	N/A	11.5	33
32-226	RMC-20L W/SN W/TR	Locking R&C, Touch Read	20	27/32	11.5	33
32-262	RMC-20L W/LN W/TR	Locking R&C, Touch Read	20	1-1/32	11.5	33
32-358	RMC-20 w/2TR	Non-Locking R&C w/ 2 Touch Read	20	N/A	11.5	33
32-363	RMC-20L w/SN w/2TR	Locking R&C w/ 2 Touch Read	20	27/32	11.5	33
32-364	RMC-20L w/LN w/2TR	Locking R&C w/ 2 Touch Read	20	1-1/32	11.5	33

Part Code	Model #	Description	Tile Size	Bolt	Lid	Wt.
32-093	RMC-21	Non-Locking R&C	21	N/A	11.5	38
32-094	RMC-21L W/SN	Locking R&C	21	27/32	11.5	39
32-095	RMC-21L W/LN	Locking R&C	21	1-1/32	11.5	39
32-367	RMC-21 W/TR	Non-Locking R&C, Touch Read	21	N/A	11.5	39
32-294	RMC-21L W/SN W/TR	Locking R&C, Touch Read	21	27/32	11.5	39
32-295	RMC-21L W/LN W/TR	Locking R&C, Touch Read	21	1-1/32	11.5	39
32-368	RMC-21 W/2TR	Non-Locking R&C w/ 2 Touch Read	21	N/A	11.5	39
32-373	RMC-21L W/SN W/2TR	Locking R&C w/ 2 Touch Read	21	27/32	11.5	39
32-374	RMC-21L W/LN W/2TR	Locking R&C w/ 2 Touch Read	21	1-1/32	11.5	39

* All RMC-20 & RMC-21 series rings & covers feature special designed hinge to support lid when open.

* Special hinge "X" feature available on RMC-18 by request.

VESTAL MANUFACTURING
Sweetwater, TN 37874
800-456-9562



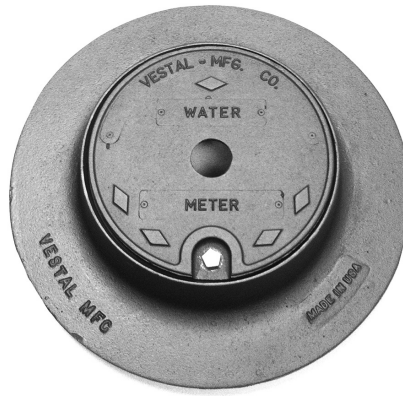
NON-RECESSED CAST IRON METER BOX RINGS & COVERS W/4" RECESSED TOUCH HOLES

Part Code	Model #	Description	Tile Size	Bolt	Lid	Wt.
32-341	RMC-15 W/RTR	Non-Locking R&C, W/Rec. Touch Read	15	N/A	11.5	31
32-342	RMC-15 W/2RTR	Non-Locking R&C, W/Rec. Touch Read	15	N/A	11.5	31
32-343	RMC-15L W/SN W/RTR	Locking R&C, W/Rec. Touch Read	15	27/32	11.5	32
32-344	RMC-15L W/LN W/RTR	Locking R&C, W/Rec. Touch Read	15	1-1/32	11.5	32
32-347	RMC-15L W/SN W/2RTR	Locking R&C, W/Rec. Touch Read	15	27/32	11.5	32
32-348	RMC-15L W/LN W/2RTR	Locking R&C, W/Rec. Touch Read	15	1-1/32	11.5	32

Part Code	Model #	Description	Tile Size	Bolt	Lid	Wt.
32-350	RMC-18 W/RTR	Non-Locking R&C, W/Rec. Touch Read	18	N/A	11.5	33
32-351	RMC-18 W/2RTR	Non-Locking R&C, W/Rec. Touch Read	18	N/A	11.5	33
32-352	RMC-18L W/SN W/RTR	Locking R&C, W/Rec. Touch Read	18	27/32	11.5	34
32-353	RMC-18L W/LN W/RTR	Locking R&C, W/Rec. Touch Read	18	1-1/32	11.5	34
32-356	RMC-18L W/SN W/2RTR	Locking R&C, W/Rec. Touch Read	18	27/32	11.5	34
32-357	RMC-18L W/LN W/2RTR	Locking R&C, W/Rec. Touch Read	18	1-1/32	11.5	34

Part Code	Model #	Description	Tile Size	Bolt	Lid	Wt.
32-359	RMC-20 W/RTR	Non-Locking R&C, W/Rec. Touch Read	20	N/A	11.5	36
32-360	RMC-20 W/2RTR	Non-Locking R&C, W/Rec. Touch Read	20	N/A	11.5	36
32-361	RMC-20L W/SN W/RTR	Locking R&C, W/Rec. Touch Read	20	27/32	11.5	37
32-362	RMC-20L W/LN W/RTR	Locking R&C, W/Rec. Touch Read	20	1-1/32	11.5	37
32-365	RMC-20L W/SN W/2RTR	Locking R&C, W/Rec. Touch Read	20	27/32	11.5	37
32-366	RMC-20L W/LN W/2RTR	Locking R&C, W/Rec. Touch Read	20	1-1/32	11.5	37

Part Code	Model #	Description	Tile Size	Bolt	Lid	Wt.
32-369	RMC-21 W/RTR	Non-Locking R&C, W/Rec. Touch Read	21	N/A	11.5	42
32-370	RMC-21 W/2RTR	Non-Locking R&C, W/Rec. Touch Read	21	N/A	11.5	42
32-371	RMC-21L W/SN W/RTR	Locking R&C, W/Rec. Touch Read	21	27/32	11.5	43
32-372	RMC-21L W/LN W/RTR	Locking R&C, W/Rec. Touch Read	21	1-1/32	11.5	43
32-375	RMC-21L W/SN W/2RTR	Locking R&C, W/Rec. Touch Read	21	27/32	11.5	43
32-376	RMC-21L W/LN W/2RTR	Locking R&C, W/Rec. Touch Read	21	1-1/32	11.5	43



RECESSED CAST IRON METER BOX RINGS & COVERS

Part Code	Model #	Description	Tile Size	Bolt	Lid	Wt.
32-037	RMRC-15	Non-Locking R&C	15	N/A	11.5	29
32-038	RMRC-15L W/SN	Locking R&C	15	27/32	11.5	29
32-065	RMRC-15L W/LN	Locking R&C	15	1-1/32	11.5	29
32-237	RMRC-15 W/TR	Non-Locking R&C, Touch Read	15	N/A	11.5	29
32-238	RMRC-15L W/SN W/TR	Locking R&C, Touch Read	15	27/32	11.5	29
32-265	RMRC-15L W/LN W/TR	Locking R&C, Touch Read	15	1-1/32	11.5	29
32-377	RMRC-15 W/2TR	Non-Locking R&C w/ 2 Touch Read	15	N/A	11.5	29
32-382	RMRC-15L W/SN W/2TR	Locking R&C w/ 2 Touch Read	15	27/32	11.5	29
32-383	RMRC-15L W/LN W/2TR	Locking R&C w/ 2 Touch Read	15	1-1/32	11.5	29

Part Code	Model #	Description	Tile Size	Bolt	Lid	Wt.
32-040	RMRC-18	Non-Locking R&C	18	N/A	11.5	39
32-041	RMRC-18L W/SN	Locking R&C	18	27/32	11.5	39
32-066	RMRC-18L W/LN	Locking R&C	18	1-1/32	11.5	39
32-240	RMRC-18 W/TR	Non-Locking R&C, Touch Read	18	N/A	11.5	39
32-241	RMRC-18L W/SN W/TR	Locking R&C, Touch Read	18	27/32	11.5	39
32-266	RMRC-18L W/LN W/TR	Locking R&C, Touch Read	18	1-1/32	11.5	39
32-386	RMRC-18 W/2TR	Non-Locking R&C w/ 2 Touch Read	18	N/A	11.5	39
32-391	RMRC-18L W/SN W/2TR	Locking R&C w/ 2 Touch Read	18	27/32	11.5	39
32-392	RMRC-18L W/LN W/2TR	Locking R&C w/ 2 Touch Read	18	1-1/32	11.5	39

Part Code	Model #	Description	Tile Size	Bolt	Lid	Wt.
32-054	RMRC-20	Non-Locking R&C	20	N/A	11.5	45
32-059	RMRC-20L W/SN	Locking R&C	20	27/32	11.5	45
32-071	RMRC-20L W/LN	Locking R&C	20	1-1/32	11.5	45
32-254	RMRC-20 W/TR	Non-Locking R&C, Touch Read	20	N/A	11.5	45
32-259	RMRC-20L W/SN W/TR	Locking R&C, Touch Read	20	27/32	11.5	45
32-271	RMRC-20L W/LN W/TR	Locking R&C, Touch Read	20	1-1/32	11.5	45
32-421	RMRC-20 w/2TR	Non-Locking R&C w/ 2 Touch Read	20	N/A	11.5	45
32-426	RMRC-20L w/SN w/2TR	Locking R&C w/ 2 Touch Read	20	27/32	11.5	45
32-427	RMRC-20L w/LN w/2TR	Locking R&C w/ 2 Touch Read	20	1-1/32	11.5	45

Part Code	Model #	Description	Tile Size	Bolt	Lid	Wt.
32-097	RMRC-21	Non-Locking R&C	21	N/A	11.5	46
32-098	RMRC-21L W/SN	Locking R&C	21	27/32	11.5	46
32-099	RMRC-21L W/LN	Locking R&C	21	1-1/32	11.5	46
32-430	RMRC-21 W/TR	Non-Locking R&C, Touch Read	21	N/A	11.5	46
32-298	RMRC-21L W/SN W/TR	Locking R&C, Touch Read	21	27/32	11.5	46
32-299	RMRC-21L W/LN W/TR	Locking R&C, Touch Read	21	1-1/32	11.5	46
32-431	RMRC-21 W/2TR	Non-Locking R&C w/ 2 Touch Read	21	N/A	11.5	46
32-436	RMRC-21L W/SN W/2TR	Locking R&C w/ 2 Touch Read	21	27/32	11.5	46
32-437	RMRC-21L W/LN W/2TR	Locking R&C w/ 2 Touch Read	21	1-1/32	11.5	46

VESTAL MANUFACTURING
 Sweetwater, TN 37874
 800-456-9562



RECESSED CAST IRON METER BOX RINGS & COVERS W/4" RECESSED TOUCH HOLES

Part Code	Model #	Description	Tile Size	Bolt	Lid	Wt.
32-378	RMRC-15 W/RTR	Non-Locking R&C, W/Rec. Touch Read	15	N/A	11.5	29
32-379	RMRC-15 W/2RTR	Non-Locking R&C, W/Rec. Touch Read	15	N/A	11.5	29
32-380	RMRC-15L W/SN W/RTR	Locking R&C, W/Rec. Touch Read	15	27/32	11.5	30
32-381	RMRC-15L W/LN W/RTR	Locking R&C, W/Rec. Touch Read	15	1-1/32	11.5	30
32-384	RMRC-15L W/SN W/2RTR	Locking R&C, W/Rec. Touch Read	15	27/32	11.5	30
32-385	RMRC-15L W/LN W/2RTR	Locking R&C, W/Rec. Touch Read	15	1-1/32	11.5	30

Part Code	Model #	Description	Tile Size	Bolt	Lid	Wt.
32-387	RMRC-18 W/RTR	Non-Locking R&C, W/Rec. Touch Read	18	N/A	11.5	39
32-388	RMRC-18 W/2RTR	Non-Locking R&C, W/Rec. Touch Read	18	N/A	11.5	39
32-389	RMRC-18L W/SN W/RTR	Locking R&C, W/Rec. Touch Read	18	27/32	11.5	39
32-390	RMRC-18L W/LN W/RTR	Locking R&C, W/Rec. Touch Read	18	1-1/32	11.5	39
32-393	RMRC-18L W/SN W/2RTR	Locking R&C, W/Rec. Touch Read	18	27/32	11.5	39
32-394	RMRC-18L W/LN W/2RTR	Locking R&C, W/Rec. Touch Read	18	1-1/32	11.5	39

Part Code	Model #	Description	Tile Size	Bolt	Lid	Wt.
32-422	RMRC-20 W/RTR	Non-Locking R&C, W/Rec. Touch Read	20	N/A	11.5	45
32-423	RMRC-20 W/2RTR	Non-Locking R&C, W/Rec. Touch Read	20	N/A	11.5	45
32-424	RMRC-20L W/SN W/RTR	Locking R&C, W/Rec. Touch Read	20	27/32	11.5	45
32-425	RMRC-20L W/LN W/RTR	Locking R&C, W/Rec. Touch Read	20	1-1/32	11.5	45
32-428	RMRC-20L W/SN W/2RTR	Locking R&C, W/Rec. Touch Read	20	27/32	11.5	45
32-429	RMRC-20L W/LN W/2RTR	Locking R&C, W/Rec. Touch Read	20	1-1/32	11.5	45

Part Code	Model #	Description	Tile Size	Bolt	Lid	Wt.
32-432	RMRC-21 W/RTR	Non-Locking R&C, W/Rec. Touch Read	21	N/A	11.5	46
32-433	RMRC-21 W/2RTR	Non-Locking R&C, W/Rec. Touch Read	21	N/A	11.5	46
32-434	RMRC-21L W/SN W/RTR	Locking R&C, W/Rec. Touch Read	21	27/32	11.5	46
32-435	RMRC-21L W/LN W/RTR	Locking R&C, W/Rec. Touch Read	21	1-1/32	11.5	46
32-438	RMRC-21L W/SN W/2RTR	Locking R&C, W/Rec. Touch Read	21	27/32	11.5	46
32-439	RMRC-21L W/LN W/2RTR	Locking R&C, W/Rec. Touch Read	21	1-1/32	11.5	46



DOUBLE FROST PROTECTION RINGS & COVERS W/ FROST PAN

Part Code	Model #	Description	Box Size	Bolt	Lid	Wt.
32-750	W-18P-L R&C w/SN	Locking Ring & Cover w/pan	18	27/32	11.5	58
32-751	W-18P-L R&C w/LN	Locking Ring & Cover w/pan	18	1-1/32	11.5	58
32-752	W-18P-L R&C w/SN w/TR	Locking Ring & Cover w/pan w/TR	18	27/32	11.5	58
32-753	W-18P-L R&C w/LN w/TR	Locking Ring & Cover w/pan w/TR	18	1-1/32	11.5	58
32-754	W-18P-L R&C w/SN w/2TR	Locking Ring & Cover w/pan w/2TR	18	27/32	11.5	58
32-755	W-18P-L R&C w/LN w/2TR	Locking Ring & Cover w/pan w/2TR	18	1-1/32	11.5	58
32-756	W-18P-L R&C w/SN w/RTR	Locking Ring & Cover w/pan w/Rec TR	18	27/32	11.5	58
32-757	W-18P-L R&C W/LN W/RTR	Locking Ring & Cover w/pan w/Rec TR	18	1-1/32	11.5	58
32-758	W-18P-L R&C W/SN W/2RTR	Locking Ring & Cover w/pan w/Rec 2TR	18	27/32	11.5	58
32-759	W-18P-L R&C W/LN W/2RTR	Locking Ring & Cover w/pan w/Rec 2TR	18	1-1/32	11.5	58
32-760	W-18P-L R&C W/SN W/ITRON TR	Locking Ring & Cover w/pan w/ltron TR	18	27/32	11.5	58
32-761	W-18P-L R&C W/LN W/ITRON TR	Locking Ring & Cover w/pan w/ltron TR	18	1-1/32	11.5	58
32-762	W-20P-L R&C W/SN	Locking Ring & Cover w/pan	20	27/32	11.5	62
32-763	W-20P-L R&C W/LN	Locking Ring & Cover w/pan	20	1-1/32	11.5	62
32-764	W-20P-L R&C W/SN W/TR	Locking Ring & Cover w/pan w/TR	20	27/32	11.5	62
32-765	W-20P-L R&C W/LN W/TR	Locking Ring & Cover w/pan w/TR	20	1-1/32	11.5	62
32-766	W-20P-L R&C W/SN W/2TR	Locking Ring & Cover w/pan w/2TR	20	27/32	11.5	62
32-767	W-20P-L R&C W/LN W/2TR	Locking Ring & Cover w/pan w/2TR	20	1-1/32	11.5	62
32-768	W-20P-L R&C W/SN W/RTR	Locking Ring & Cover w/pan w/Rec TR	20	27/32	11.5	62
32-769	W-20P-L R&C W/LN W/RTR	Locking Ring & Cover w/pan w/Rec TR	20	1-1/32	11.5	62
32-770	W-20P-L R&C W/SN W/2RTR	Locking Ring & Cover w/pan w/Rec 2TR	20	27/32	11.5	62
32-771	W-20P-L R&C W/LN W/2RTR	Locking Ring & Cover w/pan w/Rec 2TR	20	1-1/32	11.5	62
32-772	W-20P-L R&C W/SN W/ITRON TR	Locking Ring & Cover w/pan w/ltron TR	20	27/32	11.5	62
32-773	W-20P-L R&C W/LN W/ITRON TR	Locking Ring & Cover w/pan w/ltron TR	20	1-1/32	11.5	62



Part Code	Model #	Description	Box Size	Lid	Wt.
32-775	W-18 Ring only	Double Ring only	18	11.5	45
32-776	W-20 Ring only	Double Ring only	20	11.5	50

Part Code	Model #	Description	Lid	Wt.
32-777	W-1 Inner Pan only	Frost Pan for W-Rings	N/A	1

VESTAL MANUFACTURING
Sweetwater, TN 37874
800-456-9562



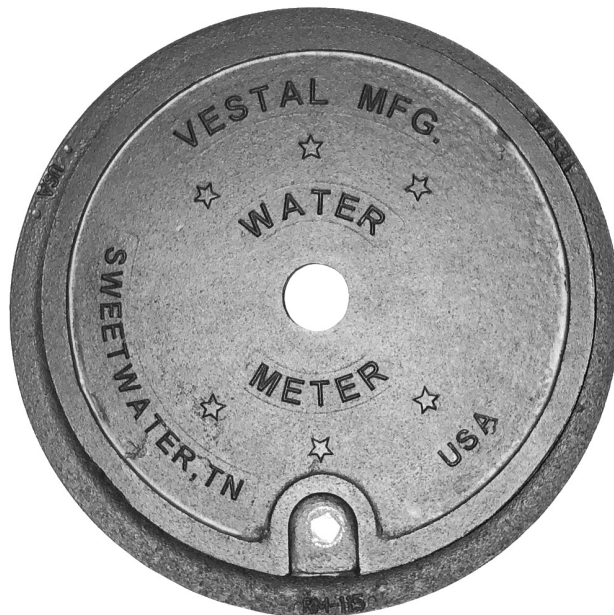
RECESSED CAST IRON METER BOX RINGS & COVERS - BALTIMORE LID - SPIKED RING

Part Code	Model #	Description	Tile Size	Bolt	Lid	Wt.
32-408	BRMRC-18 SPIKED	Non-Locking R&C SPIKED	18	N/A	12	39
32-409	BRMRC-18 SPIKED W/TR	Non-Locking R&C SPIKED w/ Touch Read	18	N/A	12	39
32-410	BRMRC-18 SPIKED W/2TR	Non-Locking R&C SPIKED w/ Touch Read	18	N/A	12	39
32-411	BRMRC-18 SPIKED W/RTR	Non-Locking R&C SPIKED w/ Rec. Touch Read	18	N/A	12	41
32-412	BRMRC-18 SPIKED W/2RTR	Non-Locking R&C SPIKED w/ 2 Rec.Touch Read	18	N/A	12	41
32-482	BRMRC-18L SPIKED W/SN	Locking R&C SPIKED	18	27/32	12	41
32-483	BRMRC-18L SPIKED W/LN	Locking R&C SPIKED	18	1-1/32	12	41
32-413	BRMRC-18L SPIKED W/SN W/TR	Locking R&C SPIKED w/ Touch Read	18	27/32	12	42
32-414	BRMRC-18L SPIKED W/LN W/TR	Locking R&C SPIKED w/ Touch Read	18	1-1/32	12	42
32-415	BRMRC-18L SPIKED W/SN W/RTR	Locking R&C SPIKED w/ Rec. Touch Read	18	27/32	12	42
32-416	BRMRC-18L SPIKED W/LN W/RTR	Locking R&C SPIKED w/ Rec. Touch Read	18	1-1/32	12	42
32-417	BRMRC-18L SPIKED W/SN W/2TR	Locking R&C SPIKED w/ 2 Touch Read	18	27/32	12	39
32-418	BRMRC-18L SPIKED W/LN W/2TR	Locking R&C SPIKED w/ 2 Touch Read	18	1-1/32	12	39
32-419	BRMRC-18L SPIKED W/SN W/2RTR	Locking R&C SPIKED w/ 2 Rec. Touch Read	18	27/32	12	42
32-420	BRMRC-18L SPIKED W/LN W/2RTR	Locking R&C SPIKED w/ 2 Rec. Touch Read	18	1-1/32	12	42



NON-RECESSED RINGS & COVERS - WITHOUT HINGE

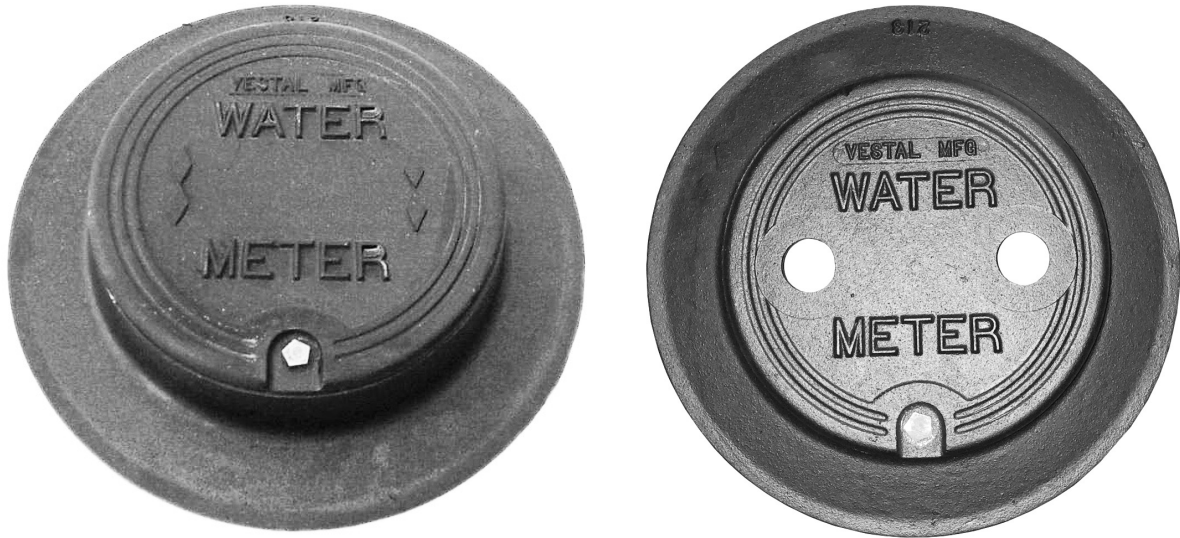
Part Code	Model #	Description	Tile Size	Bolt	Lid	Wt.
32-485	LWC-20L W/SN	Locking R&C- No Hook	20	27/32	11.5	33
32-089	LWC-20L W/LN	Locking R&C- No Hook	20	1-1/32	11.5	33
32-484	LWC-20L W/SN W/ TR	Locking R&C- Touch Read- No Hook	20	27/32	11.5	33
32-486	LWC-20L W/LN W/ TR	Locking R&C- Touch Read- No Hook	20	1-1/32	11.5	33
32-248	LWC-20L W/SN W/2TR	Locking R&C- Touch Read- No Hook	20	27/32	11.5	33
32-249	LWC-20L W/LN W/2TR	Locking R&C- Touch Read- No Hook	20	1-1/32	11.5	33
32-487	LWC-20L W/SN W/ RTR	Locking R&C- Recessed Touch Read- No Hook	20	27/32	11.5	33
32-489	LWC-20L W/LN W/ RTR	Locking R&C- Recessed Touch Read- No Hook	20	1-1/32	11.5	33
32-488	LWC-20L W/SN W/ 2RTR	Locking R&C- 2 Recessed Touch Read- No Hook	20	27/32	11.5	33
32-490	LWC-20L W/LN W/ 2RTR	Locking R&C- 2 Recessed Touch Read- No Hook	20	1-1/32	11.5	33



NON-RECESSED CAST IRON METER BOX RINGS & COVERS

Vestal No.	Model #	Description	Tile Size	Bolt	Lid	Wt.
32-057	RMC-115-L w/SN	Locking R&C	18	27/32	15	38
32-257	RMC-115-L w/SN w/TR	Locking R&C, Touch Read	18	27/32	15	38
32-258	RMC-115-L w/SN w/2TR	Locking R&C, w/2 Touch Read	18	27/32	15	38

VESTAL MANUFACTURING
Sweetwater, TN 37874
800-456-9562



NON-RECESSED CAST IRON METER BOX RINGS & COVERS

Part Code	Model #	Description	Tile Size	Bolt	Lid	Wt.
32-082	RMC-213L R&C W/LN	Locking R&C	20	1-1/32	13	47
32-083	RMC-213L R&C W/SN	Locking R&C	20	27/32	13	47
32-282	RMC-213L R&C W/LN & W/TR	Locking R&C, Touch Read	20	1-1/32	13	47
32-283	RMC-213L R&C W/SN & W/TR	Locking R&C, Touch Read	20	27/32	13	47
32-284	RMC-213L R&C W/LN & W/2TR	Locking R&C, w/2 Touch Read	20	1-1/32	13	47
32-285	RMC-213L R&C W/SN & W/2TR	Locking R&C, w/2 Touch Read	20	27/32	13	47

*RMC-213 series rings & covers feature special designed hinge to support lid when open.



RECESSED CAST IRON METER BOX RINGS & COVERS

Part Code	Model #	Description	Tile Size	Bolt	Lid	Wt.
32-072	RMRC-215L R&C W/SN	Locking R&C	20	27/32	15	50
32-073	RMRC-215L R&C W/LN	Locking R&C	20	1-1/32	15	50
32-272	RMRC-215L R&C W/SN W/TR	Locking R&C, Touch Read	20	27/32	15	50
32-273	RMRC-215L R&C W/LN W/TR	Locking R&C, Touch Read	20	1-1/32	15	50
32-107	RMRC-215L R&C W/SN W/2TR	Locking R&C, 2 Touch Read	20	27/32	15	50
32-108	RMRC-215L R&C W/LN W/2TR	Locking R&C, 2 Touch Read	20	1-1/32	15	50
32-277	RMRC-215L R&C W/SN W/RTR	Locking R&C, w/ Rec. Touch Read	20	27/32	15	52
32-287	RMRC-215L R&C W/LN W/RTR	Locking R&C, w/ Rec. Touch Read	20	1-1/32	15	52
32-278	RMRC-215L R&C W/SN W/2RTR	Locking R&C w/2 Rec. Touch Read	20	27/32	15	56
32-288	RMRC-215L R&C W/LN W/2RTR	Locking R&C w/2 Rec. Touch Read	20	1-1/32	15	56

VESTAL MANUFACTURING
Sweetwater, TN 37874
800-456-9562



HOOK COVER NON-RECESSED CAST IRON METER BOX RINGS & COVERS

Part Code	Model #	Description	Tile Size	Bolt	Lid	Wt.
32-102	RMC-15H	Non-Locking Drop-In	15	N/A	11.5	27
32-024	RMC-18H	Non-Locking Drop-In	18	N/A	11.5	30
32-224	RMC-18H W/TR	Non-Locking Drop-In w/Touch Read	18	N/A	11.5	30
32-027	RMC-20H	Non-Locking Drop-In	20	N/A	11.5	47
32-227	RMC-20H W/TR	Non-Locking Drop-In w/Touch Read	20	N/A	11.5	47



CAST IRON ELEVATOR RINGS

Vestal No.	Model #	Description	Type	Bolt	Lid	Wt.
96-146	ELR-15	1-1/2" Elevator Ring	Non-Recessed	J-Bolt	12	8
96-147	ELR-3	3" Elevator Ring	Non-Recessed	J-Bolt	12	10
96-186	ELR-25	2-1/2" Elevator Ring	Recessed	Set Screw	11-1/2	10
96-187	ELR-4	4" Elevator Ring	Recessed	Set Screw	11-1/2	16



CAST IRON TOUCH READ PLUG

Part Code	Model #	Description	Size	Bolt	Lid	Wt.
32-074	TR Plug with Cotter Pin	Plug for Touch Read Holes	1 3/4	N/A	Any	2

VESTAL MANUFACTURING
Sweetwater, TN 37874
800-456-9562



CAST IRON METER BOX RINGS

Part Code	Model #	Description	Tile Size	Lid	Wt.
32-034	RM-15	17" (OD) Ring	15	11.5	16
32-028	RM-18	20" (OD) Ring	18	11.5	19
32-028X	RM-18 "X"	20" (OD) Ring	18	11.5	19
32-163	RM-115	20" (OD) Ring	18	15	19
32-029	RM-20	21.75" (OD) Ring	20	11.5	22
32-087	LW-20	21.75" (OD) Ring	20	11.5	22
32-053	RM-213	22.5" (OD) Ring	20	13	22
32-092	RM-21	24" (OD) Ring	21	11.5	28



CAST IRON METER BOX RINGS - RECESSED

Part Code	Model #	Description	Tile Size	Lid	Wt.
32-039	RMR-15	17" (OD) Ring	15	11.5	18
32-042	RMR-18	20" (OD) Ring	18	11.5	22
32-084	RMR-18 Spiked Ring	20" (OD) Ring	18	11.5	28
32-058	RMR-20	21-5/8" (OD) Ring	20	11.5	28
32-700	BRMR-20	21-5/8" (OD) Ring	20	12	31
32-115	RMR-215	21-5/8" (OD) Ring	20	15	30
32-096	RMR-21	24" (OD) Ring	21	11.5	33



FLAT CAST IRON METER RING - RECESSED

Part Code	Model #	Description	Tile Size	Lid	Wt.
32-103	FRMR-18	20.5" (OD) Ring	18	11.5	28

NON RECESSED CAST IRON METER BOX COVERS ONLY

RMCL



RMCL W/TR



RMCL W/2TR



RMCL W/RTR



RMCL W/2RTR



RMCI W/TR



RMCL EX-HVY



RMCL EX-HVY W/TR



RMCL EX-HVY W/2TR



RMCL 213



RMCL 213 W/TR



RMC 213 W/2TR



RMCH



RM 115 W/TR



VESTAL MANUFACTURING
Sweetwater, TN 37874
800-456-9562

NON RECESSED CAST IRON METER BOX COVERS ONLY

Part Code	Model #	Description	Bolt	Lid	Wt.
32-030	RMCL	Non-Locking Cover	N/A	11.5	11
32-031	RMCL W/SN	Locking Cover	27/32	11.5	11
32-063	RMCL W/LN	Locking Cover	1-1/32	11.5	11
32-230	RMCL W/TR	Non Locking Cover, Touch Read	N/A	11.5	11
32-231	RMCL W/SN W/TR	Locking Cover, Touch Read	27/32	11.5	11
32-263	RMCL W/LN W/TR	Locking Cover, Touch Read	1-1/32	11.5	11
32-440	RMCL W/2TR	Non-Locking Cover w/ Touch Read	N/A	11.5	11
32-445	RMCL W/SN W/2TR	Locking Cover w/ Touch Read	27/32	11.5	12
32-446	RMCL W/LN W/2TR	Locking Cover w/ Touch Read	1-1/32	11.5	12
32-441	RMCL W/RTR	Non-Locking Cover w/Rec Touch Read	N/A	11.5	12
32-442	RMCL W/2RTR	Non-Locking Cover w/Rec 2 Touch Read	N/A	11.5	12
32-443	RMCL W/SN W/RTR	Locking Cover w/Rec Touch Read	27/32	11.5	12
32-444	RMCL W/LN W/RTR	Locking Cover w/Rec Touch Read	1-1/32	11.5	12
32-447	RMCL W/SN W/2RTR	Locking Cover w/Rec 2 Touch Read	27/32	11.5	12
32-448	RMCL W/LN W/2RTR	Locking Cover w/Rec 2 Touch Read	1-1/32	11.5	12
32-300	RMCI W/TR	Non-Locking Cover w/Itron TR	N/A	11.5	14
32-301	RMCI W/SN W/TR	Locking Cover w/Itron TR	27/32	11.5	15
32-302	RMCI W/LN W/TR	Locking Cover w/Itron TR	1-1/32	11.5	15
32-080	RMCL EX-HVY W/SN	Extra Heavy Locking Cover	27/32	11.5	26
32-081	RMCL EX-HVY W/LN	Extra Heavy Locking Cover	1-1/32	11.5	26
32-280	RMCL EX-HVY W/SN W/TR	Extra Heavy Locking Cover, Touch Read	27/32	11.5	26
32-281	RMCL EX-HVY W/LN W/TR	Extra Heavy Locking Cover, Touch Read	1-1/32	11.5	26
32-105	RMCL EX-HVY W/SN W/2TR	Extra Heavy Locking Cover, 2 Touch Read	27/32	11.5	26
32-106	RMCL EX-HVY W/LN W/2TR	Extra Heavy Locking Cover, 2 Touch Read	1-1/32	11.5	26
32-044	RMCL 213 W/LN	Locking Cover	27/32	13	21
32-045	RMCL 213 W/SN	Locking Cover	1-1/32	13	21
32-244	RMCL 213 W/LN W/TR	Locking Cover, Touch Read	1-1/32	13	21
32-245	RMCL 213 W/SN W/TR	Locking Cover, Touch Read	27/32	13	21
32-242	RMCL 213 W/LN W/2TR	Locking Cover, 2 Touch Read	1-1/32	13	21
32-243	RMCL 213 W/SN W/2TR	Locking Cover, 2 Touch Read	27/32	13	21
32-160	RMCL 115 W/SN	Locking Cover	27/32	15	18
32-161	RMCL 115 W/SN W/TR	Locking Cover, Touch Read	27/32	15	18
32-162	RMCL 115 W/SN W/2TR	Locking Cover, 2 Touch Read	27/32	15	18
32-032	RMCH	Hook Non-Locking Cover	N/A	11.5	9
32-232	RMCH W/TR	Hook Non-Locking Cover w/TR	N/A	11.5	9

RECESSED CAST IRON METER BOX COVERS ONLY

RMRCCL



RMRCCL W/TR



RMRCCL W/2TR



RMRCCL W/RTR



RMRCCL W/2RTR



BRMRCCL



RMRC 215



RMRC 215 W/TR



RMRC 215 W/2TR



RMRC 215 COVER W/RTR



RMRC 215 COVER W/2RTR



VESTAL MANUFACTURING
Sweetwater, TN 37874
800-456-9562

RECESSED CAST IRON METER BOX COVERS ONLY

Part Code	Model #	Description	Bolt	Lid	Wt.
32-449	RMRC	Non-Locking Cover	N/A	11.5	11
32-452	RMRCL W/SN	Locking Cover	27/32	11.5	11
32-453	RMRCL W/LN	Locking Cover	1-1/32	11.5	11
32-450	RMC W/TR	Non Locking Cover, Touch Read	N/A	11.5	11
32-454	RMRCL W/SN W/TR	Locking Cover, Touch Read	27/32	11.5	11
32-455	RMRCL W/LN W/TR	Locking Cover, Touch Read	1-1/32	11.5	11
32-451	RMRC W/2TR	Non-Locking Cover w/ Touch Read	N/A	11.5	12
32-456	RMRCL W/SN W/2TR	Locking Cover w/ Touch Read	27/32	11.5	12
32-457	RMRCL W/LN W/2TR	Locking Cover w/ Touch Read	1-1/32	11.5	12
32-458	RMRC W/RTR	Non-Locking Cover w/Rec Touch Read	N/A	11.5	12
32-459	RMRC W/2RTR	Non-Locking Cover w/Rec 2 Touch Read	N/A	11.5	12
32-460	RMRCL W/SN W/RTR	Locking Cover w/Rec Touch Read	27/32	11.5	12
32-461	RMRCL W/LN W/RTR	Locking Cover w/Rec Touch Read	1-1/32	11.5	12
32-462	RMRCL W/SN W/2RTR	Locking Cover w/Rec 2 Touch Read	27/32	11.5	12
32-463	RMRCL W/LN W/2RTR	Locking Cover w/Rec 2 Touch Read	1-1/32	11.5	12
32-464	BRMRC	Baltimore Non-Locking Lid	N/A	12	12
32-468	BRMRCL W/SN	Baltimore Locking Lid	27/32	12	12
32-469	BRMRCL W/LN	Baltimore Locking Lid	1-1/32	12	12
32-109	RMRCL 215 CVR only W/SN	15 In. Locking Cover	27/32	15	17
32-110	RMRCL 215 CVR only W/LN	15 In. Locking Cover	1-1/32	15	17
32-111	RMRCL 215 CVR only W/SN W/TR	15 In. Locking Cover Touch Read	27/32	15	17
32-112	RMRCL 215 CVR only W/LN W/TR	15 In. Locking Cover Touch Read	1-1/32	15	17
32-113	RMRCL 215 CVR only W/SN W/2TR	15 In. Locking Cover 2-Touch Read	27/32	15	17
32-114	RMRCL 215 CVR only W/LN W/2TR	15 In. Locking Cover 2-Touch Read	1-1/32	15	17
32-118	RMRCL 215 CVR only W/SN W/RTR	Locking Cover, Rec. Touch Read	27/32	15	24
32-138	RMRCL 215 CVR only W/LN W/RTR	Locking Cover, Rec. Touch Read	1-1/32	15	24
32-119	RMRCL 215 CVR only W/SN W/2RTR	Locking Cover, 2 Rec. Touch Read	27/32	15	27
32-139	RMRCL 215 CVR only W/LN W/2RTR	Locking Cover, 2 Rec. Touch Read	1-1/32	15	27



Non-Recessed Plastic Covers Only



- Slip resistant diamond tread pattern
- Non-Recessed design allows assembly into Vestal non-recessed cast iron meter box rings
- Will fit Vestal RM-15, RM-18, RM-20, LW-20, and RM-21 meter box rings
- H-20 load rated for pedestrian and light traffic
- Cover design allows for simple installation of radio read, AMR, and AMI brackets
- Engineered to resist extreme temperatures, UV sunlight, and chemical exposures

Part No.	Model	Touch Read	Bolt	Lid	Weight
32-815	UB PLASTIC U-BRACKET	-	-	-	<1 lb.
32-780	P-RMCL w/SN	-	27/32"	11-1/2"	3 lbs.
32-780BTR	P-RMCL Cover w/SN w/Badger TR	3" Recess	27/32"	11-1/2"	3 lbs.
32-780NTR	P-RMCL Cover w/SN w/Neptune TR	4-1/2" Oblong Recess	27/32"	11-1/2"	3 lbs.
32-780STR	P-RMCL Cover w/SN w/Sensus TR	4-1/8" Recess	27/32"	11-1/2"	3 lbs.
32-781	P-RMCL w/LN	-	1-1/32"	11-1/2"	3 lbs.
32-781BTR	P-RMCL Cover w/LN w/Badger TR	3" Recess	1-1/32"	11-1/2"	3 lbs.
32-781NTR	P-RMCL Cover w/LN w/Neptune TR	4-1/2" Oblong Recess	1-1/32"	11-1/2"	3 lbs.
32-781STR	P-RMCL Cover w/LN w/Sensus TR	4-1/8" Recess	1-1/32"	11-1/2"	3 lbs.

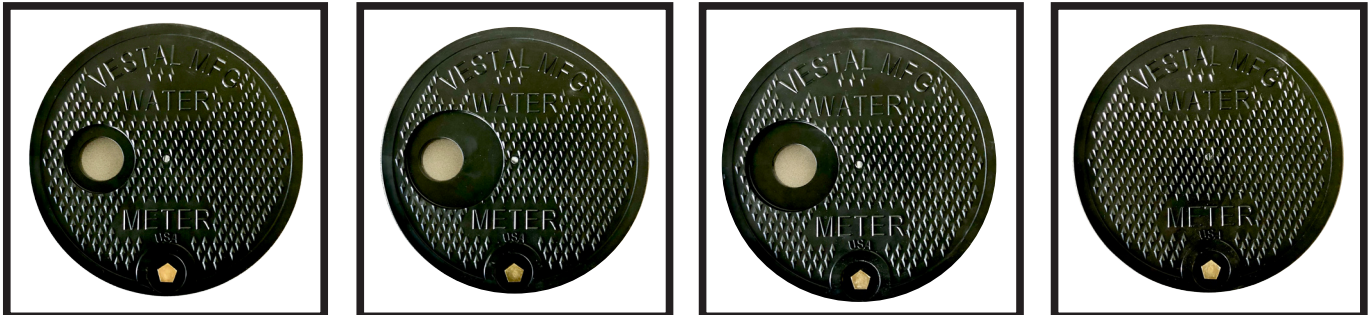


Non-Recessed Covers with Cast Iron Rings

Part No.	Model No.	Tile Size	Bolt	Lid	Weight
32-796	P-RMC-18-L w/SN	18"	27/32"	11-1/2"	22 lbs.
32-796BTR	P-RMC-18-L w/SN w/Badger TR	18"	27/32"	11-1/2"	22 lbs.
32-796NTR	P-RMC-18-L w/SN w/Neptune TR	18"	27/32"	11-1/2"	22 lbs.
32-796STR	P-RMC-18-L w/SN w/Sensus TR	18"	27/32"	11-1/2"	22 lbs.
32-797	P-RMC-18-L w/LN	18"	1-1/32"	11-1/2"	22 lbs.
32-797BTR	P-RMC-18-L w/LN w/Badger TR	18"	1-1/32"	11-1/2"	22 lbs.
32-797NTR	P-RMC-18-L w/LN w/Neptune TR	18"	1-1/32"	11-1/2"	22 lbs.
32-797STR	P-RMC-18-L w/LN w/Sensus TR	18"	1-1/32"	11-1/2"	22 lbs.
32-798	P-RMC-20-L w/SN	20"	27/32"	11-1/2"	25 lbs.
32-798BTR	P-RMC-20-L w/SN w/Badger TR	20"	27/32"	11-1/2"	25 lbs.
32-798NTR	P-RMC-20-L w/SN w/Neptune TR	20"	27/32"	11-1/2"	25 lbs.
32-798STR	P-RMC-20-L w/SN w/Sensus TR	20"	27/32"	11-1/2"	25 lbs.
32-804	P-RMC-20-L w/LN	20"	1-1/32"	11-1/2"	25 lbs.
32-804BTR	P-RMC-20-L w/LN w/Badger TR	20"	1-1/32"	11-1/2"	25 lbs.
32-804NTR	P-RMC-20-L w/LN w/Neptune TR	20"	1-1/32"	11-1/2"	25 lbs.
32-804STR	P-RMC-20-L w/LN w/Sensus TR	20"	1-1/32"	11-1/2"	25 lbs.
32-811	P-LWC-20-L w/SN	20"	27/32"	11-1/2"	25 lbs.
32-811BTR	P-LWC-20-L w/SN w/Badger TR	20"	27/32"	11-1/2"	25 lbs.
32-811NTR	P-LWC-20-L w/SN w/Neptune TR	20"	27/32"	11-1/2"	25 lbs.
32-811STR	P-LWC-20-L w/SN w/Sensus TR	20"	27/32"	11-1/2"	25 lbs.
32-812	P-LWC-20-L w/LN	20"	1-1/32"	11-1/2"	25 lbs.
32-812BTR	P-LWC-20-L w/LN w/Badger TR	20"	1-1/32"	11-1/2"	25 lbs.
32-812NTR	P-LWC-20-L w/LN w/Neptune TR	20"	1-1/32"	11-1/2"	25 lbs.
32-812STR	P-LWC-20-L w/LN w/Sensus TR	20"	1-1/32"	11-1/2"	25 lbs.
32-805	P-RMC-21-L w/SN	21"	27/32"	11-1/2"	31 lbs.
32-805BTR	P-RMC-21-L w/SN w/Badger TR	21"	27/32"	11-1/2"	31 lbs.
32-805NTR	P-RMC-21-L w/SN w/Neptune TR	21"	27/32"	11-1/2"	31 lbs.
32-805STR	P-RMC-21-L w/SN w/Sensus TR	21"	27/32"	11-1/2"	31 lbs.
32-806	P-RMC-21-L w/LN	21"	1-1/32"	11-1/2"	31 lbs.
32-806BTR	P-RMC-21-L w/LN w/Badger TR	21"	1-1/32"	11-1/2"	31 lbs.
32-806NTR	P-RMC-21-L w/LN w/Neptune TR	21"	1-1/32"	11-1/2"	31 lbs.
32-806STR	P-RMC-21-L w/LN w/Sensus TR	21"	1-1/32"	11-1/2"	31 lbs.



Recessed Plastic Covers Only



- Slip resistant diamond tread pattern
- Recessed design allows assembly into Vestal recessed cast iron meter box rings
- Will fit Vestal RMR-15, RMR-18, W-18, RMR-20, W-20, and RMR-21 meter box rings
- H-20 load rated for pedestrian and light traffic
- Cover design allows for simple installation of radio read, AMR, and AMI brackets
- Engineered to resist extreme temperatures, UV sunlight, and chemical exposures

Part No.	Model	Touch Read	Bolt	Lid	Weight
32-815	UB PLASTIC U-BRACKET	-	-	-	<1 lb.
32-782	P-RMRCL w/SN	-	27/32"	11-1/2"	3 lbs.
32-782BTR	P-RMRCL Cover w/SN w/Badger TR	3" Recess	27/32"	11-1/2"	3 lbs.
32-782NTR	P-RMRCL Cover w/SN w/Neptune TR	4-1/2" Oblong Recess	27/32"	11-1/2"	3 lbs.
32-782STR	P-RMRCL Cover w/SN w/Sensus TR	4-1/8" Recess	27/32"	11-1/2"	3 lbs.
32-783	P-RMRCL w/LN	-	1-1/32"	11-1/2"	3 lbs.
32-783BTR	P-RMRCL Cover w/LN w/Badger TR	3" Recess	1-1/32"	11-1/2"	3 lbs.
32-783NTR	P-RMRCL Cover w/LN w/Neptune TR	4-1/2" Oblong Recess	1-1/32"	11-1/2"	3 lbs.
32-783STR	P-RMRCL Cover w/LN w/Sensus TR	4-1/8" Recess	1-1/32"	11-1/2"	3 lbs.



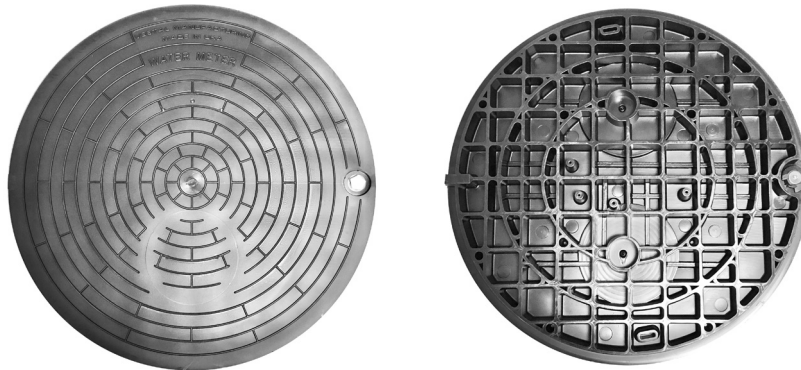
Recessed Covers with Cast Iron Rings

Part No.	Model No.	Tile Size	Bolt	Lid	Weight
32-790	P-RMRC-18-L w/SN	18"	27/32"	11-1/2"	25 lbs.
32-790BTR	P-RMRC-18-L w/SN w/Badger TR	18"	27/32"	11-1/2"	25 lbs.
32-790NTR	P-RMRC-18-L w/SN w/Neptune TR	18"	27/32"	11-1/2"	25 lbs.
32-790STR	P-RMRC-18-L w/SN w/Sensus TR	18"	27/32"	11-1/2"	25 lbs.
32-791	P-RMRC-18-L w/LN	18"	1-1/32"	11-1/2"	25 lbs.
32-791BTR	P-RMRC-18-L w/LN w/Badger TR	18"	1-1/32"	11-1/2"	25 lbs.
32-791NTR	P-RMRC-18-L w/LN w/Neptune TR	18"	1-1/32"	11-1/2"	25 lbs.
32-791STR	P-RMRC-18-L w/LN w/Sensus TR	18"	1-1/32"	11-1/2"	25 lbs.
32-792	P-RMRC-20-L w/SN	20"	27/32"	11-1/2"	28 lbs.
32-792BTR	P-RMRC-20-L w/SN w/Badger TR	20"	27/32"	11-1/2"	28 lbs.
32-792NTR	P-RMRC-20-L w/SN w/Neptune TR	20"	27/32"	11-1/2"	28 lbs.
32-792STR	P-RMRC-20-L w/SN w/Sensus TR	20"	27/32"	11-1/2"	28 lbs.
32-793	P-RMRC-20-L w/LN	20"	1-1/32"	11-1/2"	28 lbs.
32-793BTR	P-RMRC-20-L w/LN w/Badger TR	20"	1-1/32"	11-1/2"	28 lbs.
32-793NTR	P-RMRC-20-L w/LN w/Neptune TR	20"	1-1/32"	11-1/2"	28 lbs.
32-792STR	P-RMRC-20-L w/LN w/Sensus TR	20"	1-1/32"	11-1/2"	28 lbs.
32-794	P-RMRC-21-L w/SN	21"	27/32"	11-1/2"	37 lbs.
32-794BTR	P-RMRC-21-L w/SN w/Badger TR	21"	27/32"	11-1/2"	37 lbs.
32-794NTR	P-RMRC-21-L w/SN w/Neptune TR	21"	27/32"	11-1/2"	37 lbs.
32-794STR	P-RMRC-21-L w/SN w/Sensus TR	21"	27/32"	11-1/2"	37 lbs.
32-795	P-RMRC-21-L w/LN	21"	1-1/32"	11-1/2"	37 lbs.
32-795BTR	P-RMRC-21-L w/LN w/Badger TR	21"	1-1/32"	11-1/2"	37 lbs.
32-795NTR	P-RMRC-21-L w/LN w/Neptune TR	21"	1-1/32"	11-1/2"	37 lbs.
32-795STR	P-RMRC-21-L w/LN w/Sensus TR	21"	1-1/32"	11-1/2"	37 lbs.
32-789	P-W-18P-L w/SN	18"	27/32"	11-1/2"	48 lbs.
32-789BTR	P-W-18P-L w/SN w/Badger TR	18"	27/32"	11-1/2"	48 lbs.
32-789NTR	P-W-18P-L w/SN w/Neptune TR	18"	27/32"	11-1/2"	48 lbs.
32-789STR	P-W-18P-L w/SN w/Sensus TR	18"	27/32"	11-1/2"	48 lbs.
32-799	P-W-20P-L w/SN	20"	27/32"	11-1/2"	53 lbs.
32-799BTR	P-W-20P-L w/SN w/Badger TR	20"	27/32"	11-1/2"	53 lbs.
32-799NTR	P-W-20P-L w/SN w/Neptune TR	20"	27/32"	11-1/2"	53 lbs.
32-799STR	P-W-20P-L w/SN w/Sensus TR	20"	27/32"	11-1/2"	53 lbs.



MONITOR COVERS ONLY – CAST IRON

Part Code	Model #	Description	Bolt	Lid	Wt.
32-052	#20 Cover Only W/SN	Locking Cover	27/32	20	34
32-069	#20 Cover Only W/LN	Locking Cover	1-1/32	20	34
32-252	#20 Cover Only W/SN W/TR	Locking Cover, Touch Read	27/32	20	34
32-269	#20 Cover Only W/LN W/TR	Locking Cover, Touch Read	1-1/32	20	34
32-497	#20 Cover Only W/SN W/RTR	Locking Cover, Recessed Touch Read	27/32	20	34
32-498	#20 Cover Only W/LN W/RTR	Locking Cover, Recessed Touch Read	1-1/32	20	34
32-499	#20 Cover Only W/SN W/2RTR	Locking Cover, 2 Recessed Touch Read	27/32	20	34
32-500	#20 Cover Only W/LN W/2RTR	Locking Cover, 2 Recessed Touch Read	1-1/32	20	34
32-491	#21 Monitor Cover Only W/SN	Ex. Heavy Locking Cover	27/32	20	57
32-492	#21 Monitor Cover Only W/LN	Ex. Heavy Locking Cover	1-1/32	20	57
32-493	#21 Monitor Cover Only W/SN W/TR	Ex. Heavy Locking Cover, Touch Read	27/32	20	57
32-494	#21 Monitor Cover Only W/LN W/TR	Ex. Heavy Locking Cover, Touch Read	1-1/32	20	57
32-495	#21 Monitor Cover Only W/SN W/RTR	Ex. Heavy Locking Cover, Recessed Touch Read	27/32	20	57
32-496	#21 Monitor Cover Only W/LN W/RTR	Ex. Heavy Locking Cover, Recessed Touch Read	1-1/32	20	57
32-055	MONITOR RING	Monitor Ring Only - 6" High	N/A	N/A	54



MONITOR COVERS ONLY – PLASTIC

Vestal No.	Model No.	Description	Bolt	Lid	Weight
32-784	P-20 w/ SN	Plastic Monitor Lid	27/32"	20"	14 lbs.
32-808	P-20 w/ SN w/ Sensus TR	Plastic Monitor Lid w/ 4-1/8" Recess TR	27/32"	20"	14 lbs.
32-809	P-20 w/ SN w/ Badger TR	Plastic Monitor Lid w/ 3" Recess TR	27/32"	20"	14 lbs.
32-810	P-20 w/ SN w/ Neptune TR	Plastic Monitor Lid w/ 4-1/2" Recess TR	27/32"	20"	14 lbs.

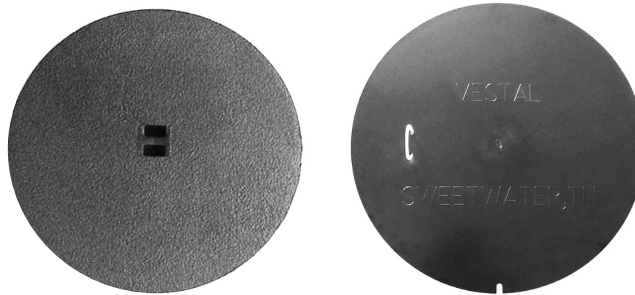
- Will fit Vestal Monitor Rings and Pit Rings
- H-20 load rated for pedestrian and light traffic
- Lid design allows for simple installation of radio read, AMR, and AMI brackets
- Under mounted brackets available for Badger, Sensus, Neptune, Itron, etc. antennas
- Engineered to resist extreme temperatures, UV sunlight, and chemical exposures

VESTAL MANUFACTURING
Sweetwater, TN 37874
800-456-9562



MONITOR RINGS & COVERS

Part Code	Model #	Description	Bolt	Lid	Wt.
32-056	MONITOR R&C W/SN	Locking Ring & Cover	27/32	20	88
32-070	MONITOR R&C W/LN	Locking Ring & Cover	1-1/32	20	88
32-256	MONITOR R&C W/SN W/TR	Locking Ring & Cover, Touch Read	27/32	20	88
32-270	MONITOR R&C W/LN W/TR	Locking Ring & Cover, Touch Read	1-1/32	20	88
32-478	MONITOR R&C W/SN W/RTR	Locking Ring & Cover, Recessed Touch Read	27/32	20	88
32-479	MONITOR R&C W/LN W/RTR	Locking Ring & Cover, Recessed Touch Read	1-1/32	20	88
32-501	MONITOR R&C W/SN W/2RTR	Locking Ring & Cover, 2 Recessed Touch Read	27/32	20	88
32-528	MONITOR R&C W/LN W/2RTR	Locking Ring & Cover, 2 Recessed Touch Read	27/32	20	88
32-090	EX-HEAVY MONITOR R&C W/SN	Locking Ring & Cover	27/32	20	112
32-091	EX-HEAVY MONITOR R&C W/LN	Locking Ring & Cover	1-1/32	20	112
32-290	EX-HEAVY MONITOR R&C W/SN W/TR	Locking Ring & Cover, Touch Read	27/32	20	112
32-291	EX-HEAVY MONITOR R&C W/LN W/TR	Locking Ring & Cover, Touch Read	1-1/32	20	112



MONITOR INNER LIDS

Part Code	Model #	Description	Lid	Wt.
32-104	Cast Iron Monitor Inner Lid	Inner Frost Lid for Monitor Ring and Cover*	20	23
32-204	Plastic Monitor Inner Lid	Inner Frost Lid for Monitor Ring and Cover*	20	4

* Note: Fits ER-2024, ER-2030, ER-2036.



EXPANDA RINGS*

Part Code	Model #	Description	Tile Size	Lid	Wt.
32-043	ER-1824	26 1/2" (OD) Adapts 18" Cover to 24" Tile	24	18	24
32-046	ER-2024	26 1/2" (OD) Adapts 20" Cover to 24" Tile	24	20	29
32-048	ER-2030	33" (OD) Adapts 20" Cover to 30" Tile	30	20	71
32-049	ER-2036	39" (OD) Adapts 20" Cover to 36" Tile	36	20	125

* Note: Vestal Expanda Rings can be added to RMC and Monitor Rings & Covers for larger pit sizes.

VESTAL MANUFACTURING
Sweetwater, TN 37874
800-456-9562



CAST IRON PIT RINGS & COVERS

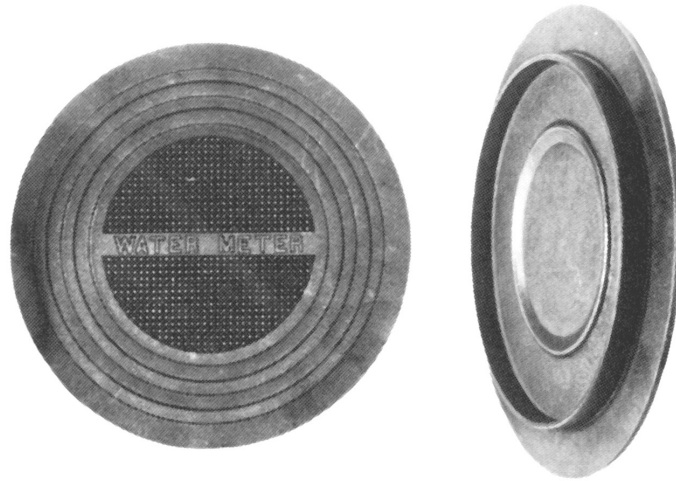
Part Code	Model #	Description	Tile Size	Bolt	Lid	Wt.
32-050	20 W/SN	Pit Ring & Standard Cover	20	27/32	20	67
32-067	20 W/LN	Pit Ring & Standard Cover	20	1-1/32	20	67
32-250	20 W/SN W/TR	Pit Ring & Standard Cover, Touch Read	20	27/32	20	67
32-267	20 W/LN W/TR	Pit Ring & Standard Cover, Touch Read	20	1-1/32	20	67
32-476	20 W/SN W/RTR	Pit Ring & Standard Cover, Rec. TR	20	27/32	20	67
32-477	20 W/LN W/RTR	Pit Ring & Standard Cover, Rec. TR	20	1-1/32	20	67
32-051	21 W/SN	Pit Ring & Heavy Cover	20	27/32	20	91
32-068	21 W/LN	Pit Ring & Heavy Cover	20	1-1/32	20	91
32-251	21 W/SN W/TR	Pit Ring & Heavy Cover, Touch Read	20	27/32	20	91
32-268	21 W/LN W/TR	Pit Ring & Heavy Cover, Touch Read	20	1-1/32	20	91
32-116	Pit Ring	Pit Ring Only - 3" High	20	N/A	N/A	35



CAST IRON FLAT PITSETTER COVERS

Part Code	Model #	Description	Pit Size	Bolt	Wt.
32-140	VF-15	Non-Locking Cover	15	N/A	21
32-141	VF-15 w/TR	Non-Locking Cover, Touch Read	15	N/A	21
32-142	VF-15 w/2TR	Non-Locking Cover, 2 Touch Read	15	N/A	21
32-145	VF-15-L w/SN	Locking Cover	15	27/32	21
32-146	VF-15-L w/SN w/TR	Locking Cover, Touch Read	15	27/32	21
32-147	VF-15-L w/SN w/2TR	Locking Cover, 2 Touch Read	15	27/32	21
32-150	VF-18	Non-Locking Cover	18	N/A	29
32-151	VF-18 w/TR	Non-Locking Cover, Touch Read	18	N/A	29
32-152	VF-18 w/2TR	Non-Locking Cover, 2 Touch Read	18	N/A	29
32-155	VF-18-L w/SN	Locking Cover	18	27/32	29
32-156	VF-18-L w/SN w/TR	Locking Cover, Touch Read	18	27/32	29
32-157	VF-18-L w/SN w/2TR	Locking Cover, 2 Touch Read	18	27/32	29

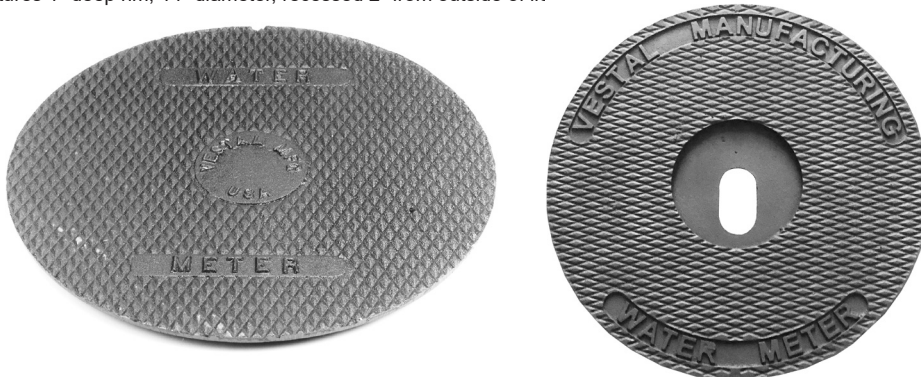
VESTAL MANUFACTURING
Sweetwater, TN 37874
800-456-9562



CAST IRON WATER METER LIDS*

Part Code	Model #	Description	Tile Size	Lid	Wt.
32-020	WM-15	Non-Locking Flat Water Meter Lid 18" OD	15	18	19
32-220	WM-15 W/TR	Non-Locking Flat Lid, Touch Read	15	18	19

* Note: WM-15 features 1" deep rim, 14" diameter, recessed 2" from outside of lid

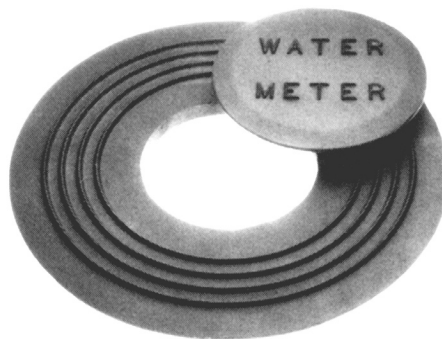


CAST IRON WATER METER LIDS*

Part Code	Model #	Description	Tile Size	Lid	Wt.
96-357	WM-18	Non-Locking Water Meter Lid	18	20	30
96-336	WM-18 W/TR	Non-Locking, Touch Read	18	20	30
96-331	WM-18 W/2TR	Non-Locking with Two Touch Read	18	20	30
96-036	WM-18 W/RTR	Non-Locking w/Rec. Touch Read	18	20	37
96-030	Heavy Duty WM-18 W/TR	Non-Locking, Touch Read	18	20	46

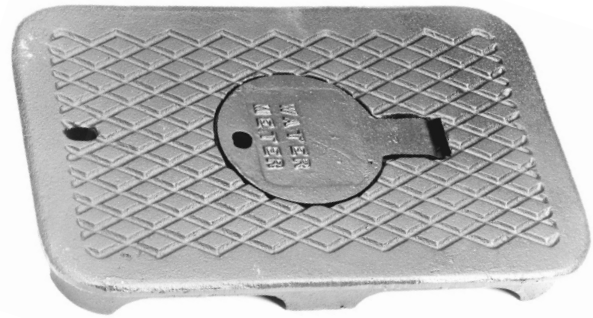
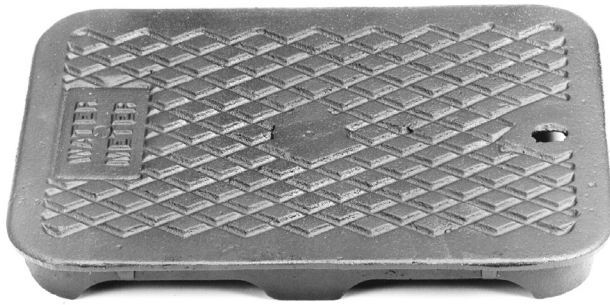
* Note: WM-18 features 1/4" deep rim, 17" diameter, recessed 1-1/4" from outside of lid.

* Lid can be marked Water Meter, Sewer, or Blank.



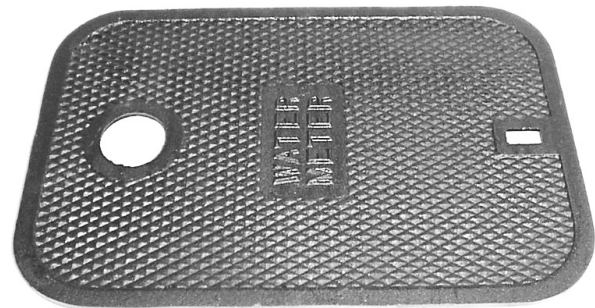
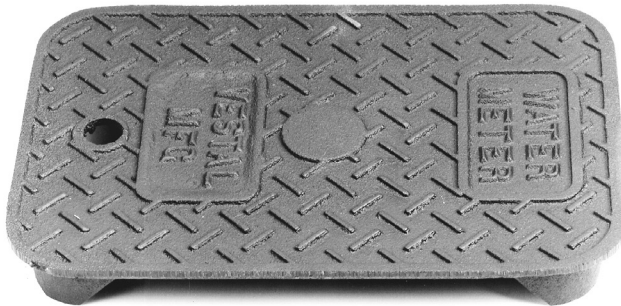
CAST IRON BELL RING & COVER

Part Code	Model #	Description	Tile Size	Lid	Wt.
32-077	18 Ring	Flat Bell Ring	18	21 (OD)	33
32-078	18 Cover	Bell Cover (Water Meter)	N/A	10.5 (OD)	10
32-279	18 Cover w/ TR	Bell Cover w/ Touch Read Hole	N/A	10.5 (OD)	10



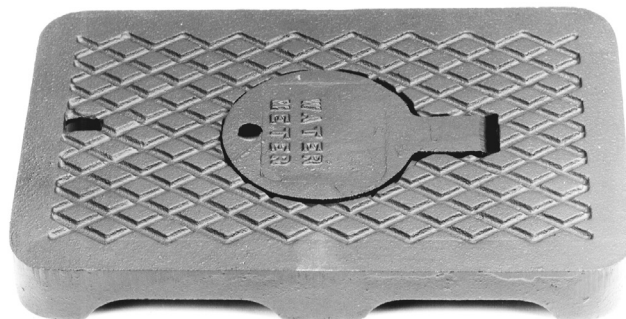
CAST IRON RECTANGULAR WATER METER LIDS WITH FLANGE

Part Code	Model #	Description	Size	Wt.
96-002	AF-1	Top Mount Meter Lid	10 7/8" x 15 7/8"	17.5
96-003	AF-1 W/TR	Top Mount Meter Lid with Touch Read	10 7/8" x 15 7/8"	17.5
96-004	AFR-2	Top Mount Meter Lid with Reader	10 7/8" x 15 7/8"	17.5



CAST IRON RECTANGULAR WATER METER LIDS WITH FLANGE

Part Code	Model #	Description	Size	Wt.
96-385	F-4	Top Mount Meter Lid	11 1/4" x 16 1/2"	12
96-337	F-4 W/TR	Top Mount Meter Lid with Touch Read	11 1/4" x 16 1/2"	12
96-330	1419 T	Top Mount Meter Lid	11 3/8" x 16 1/4"	15
96-327	1419 T W/TR	Top Mount Meter Lid with Touch Read	11 3/8" x 16 1/4"	15



DROP-IN CAST IRON RECTANGULAR METER LIDS - FLANGELESS

Part Code	Model #	Description	Size	Wt.
96-143	D-5	Drop-In Meter Lid	10" x 15"	14
96-140	D-5 W/TR	Drop-In Meter Lid with Touch Read	10" x 15"	14
96-144	DR-6	Drop-In Meter Lid with Reader	10" x 15"	15

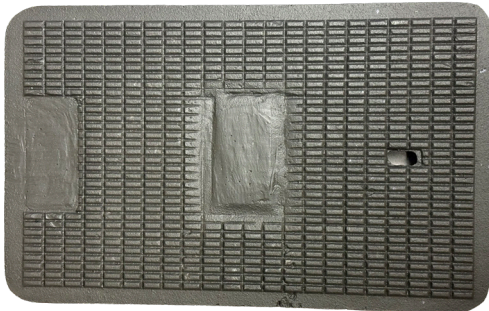
VESTAL MANUFACTURING
Sweetwater, TN 37874
800-456-9562



Rectangular Meter Box Lids



Vestal No.	Model	Fits Meter Box	Size	Wt.
96-195	36-T	1015	10-1/8" x 15-1/4"	17 lbs.
96-297	36 HIT w/Reader Lid	1015	10-1/8" x 15-1/2"	22 lbs.



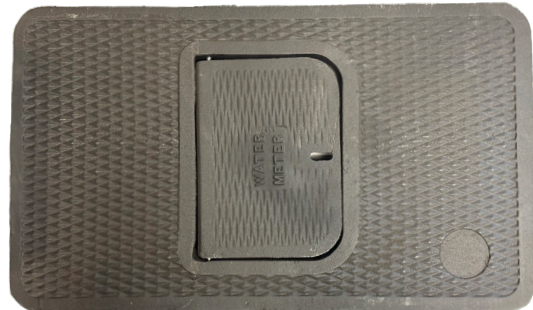
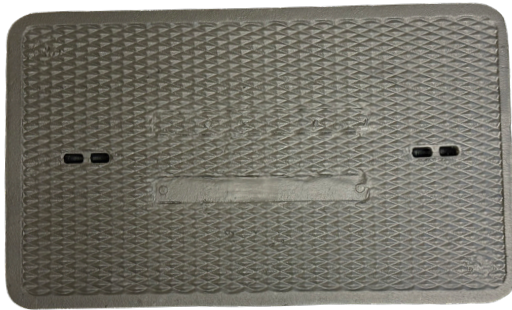
Vestal No.	Model	Fits Meter Box	Size	Wt.
96-194	37-T	1118	11-1/4" x 18-1/8"	25 lbs.
96-257	37 HIT w/Reader Lid	1118	11-1/4" x 18-1/8"	27 lbs.



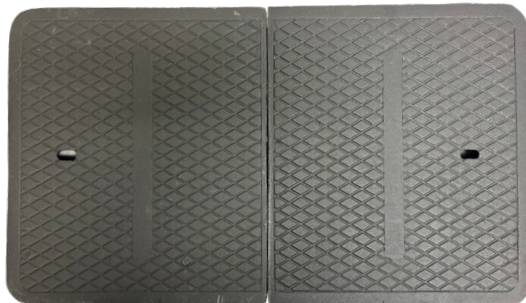
Vestal No.	Model	Fits Meter Box	Size	Wt.
96-362	Dual 12-T	1416	14-5/8" x 16-5/8"	20 lbs.
96-204	Dual H4T w/Reader Lid	1416	14-3/8" x 16-1/2"	31 lbs.



Rectangular Meter Box Lids



Vestal No.	Model	Fits Meter Box	Size	Wt.
96-226	38-T	1324	13-3/4" x 23-3/8"	48 lbs.
96-380	38 H4T w/Reader Lid	1324	13-13/16" x 23-3/8"	53 lbs.



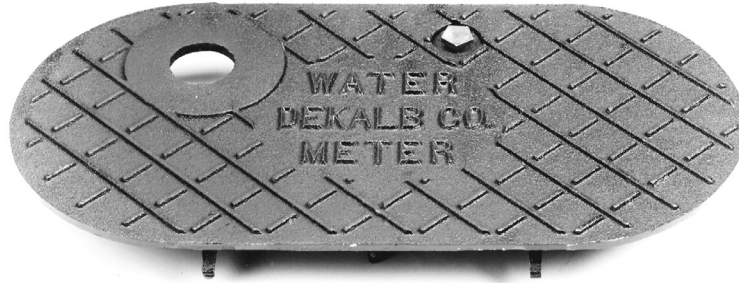
Vestal No.	Model	Fits Meter Box	Size	Wt.
96-218*	65-T (Need 2 lids per box)*	1527	13-1/4" x 15-3/16"	23 lbs.

*65-T lid is sold in eachs.



Vestal No.	Model	Fits Meter Box	Size	Wt.
96-216	66-T	1730	17-1/2" x 30-1/2"	87 lbs.

VESTAL MANUFACTURING
Sweetwater, TN 37874
800-456-9562



CAST IRON OVAL WATER METER LIDS

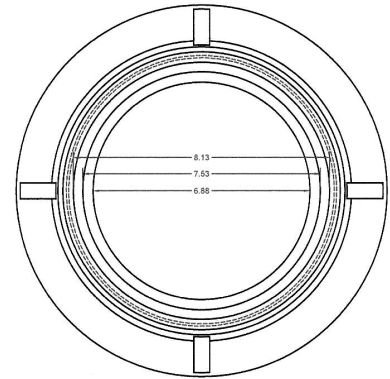
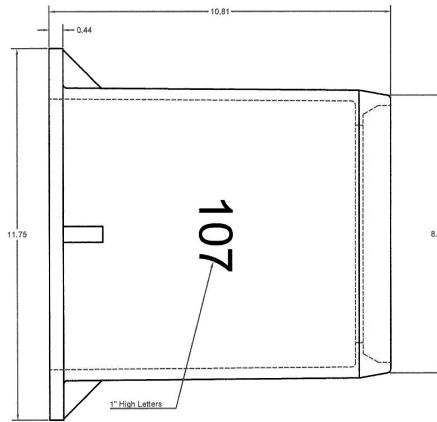
Part Code	Model #	Description	Size	Bolt	Wt.
96-179	Oval Cover w/ SN	Locking Oval Lid	19" x 10"	27/32	17
96-174	Oval Cover w/ SN w/ TR	Locking Oval Lid with Touch Read	19" x 10"	27/32	17
96-161	Oval Cover	Non-Locking Oval Lid	19" x 10"	N/A	17
96-162	Oval Cover w/ TR	Non-Locking Oval Lid with Touch Read	19" x 10"	N/A	17



MUNICIPAL CASTING PRODUCTS

MUNICIPAL CASTINGS INDEX

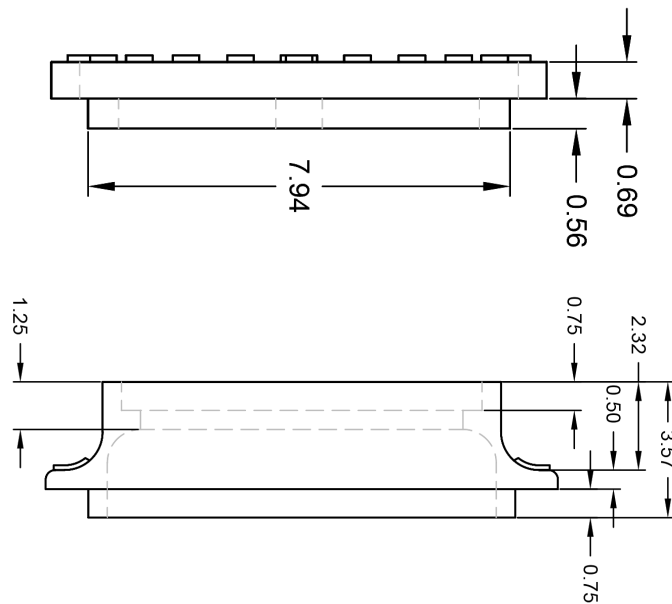
Valve Box Ring & Cover	C-28
Sewer Cleanout Ring & Cover.....	C29, C-30
Valve Box Risers & Lids	C-31
Valve Box Rings & Covers.....	C-32
Water Leak Detection Valve Box Lid	C-33



VALVE BOX RING & COVER - 10" HIGH

Vestal No.	Model & Description	Tile Size	Lid	Wt.
32-128	V-107 Valve Box Lid Only	N/A	8"	12 lbs.
32-129	V-107 Valve Box Ring Only	6.88"	N/A	29 lbs.

* Cover can be marked Water or Sewer.



SEWER CLEANOUT RING & COVER

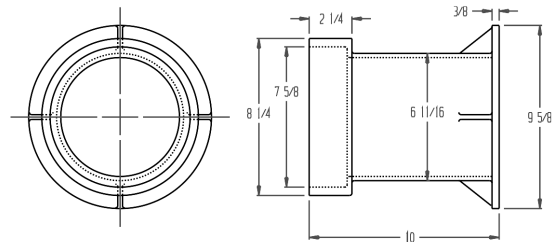
Vestal No.	Model & Description	Tile Size	Lid	Wt.
32-135	Springfield Sewer Cover	N/A	9 3/8"	15 lbs.
32-136	Springfield Cleanout Ring	8 1/4"	N/A	25 lbs.



Sewer Cleanout Frame & Lids

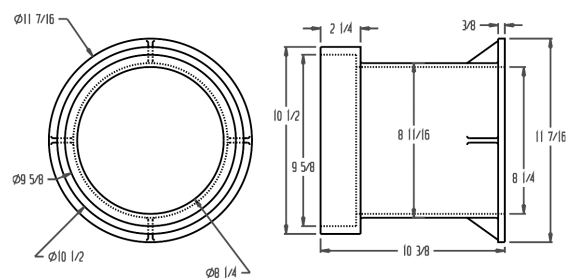
Model No. LH-6

- Fits over 4" diameter pipe & fittings.
- LH-6 accepts standard lid for 5-1/4" valve box.
- Standard lid marked Sewer. Available with Water and Storm.
- Intended for concrete, asphalt, grass or dirt installation.
- Accepts Vestal Valve Box Risers
- Total Weight - 29 lbs.
- Part Code Assembled 32-120
- Part Code Lid Only 96-100
- Part Code Frame Only 32-122



Model No. LH-10

- Fits over 6" diameter pipe & fittings.
- Standard lid marked Sewer. Available with Water and Storm.
- Intended for concrete, asphalt, grass or dirt installation.
- Total Weight - 53 lbs.
- Part Code Assembled 32-121
- Part Code Lid Only 32-124
- Part Code Frame Only 32-123

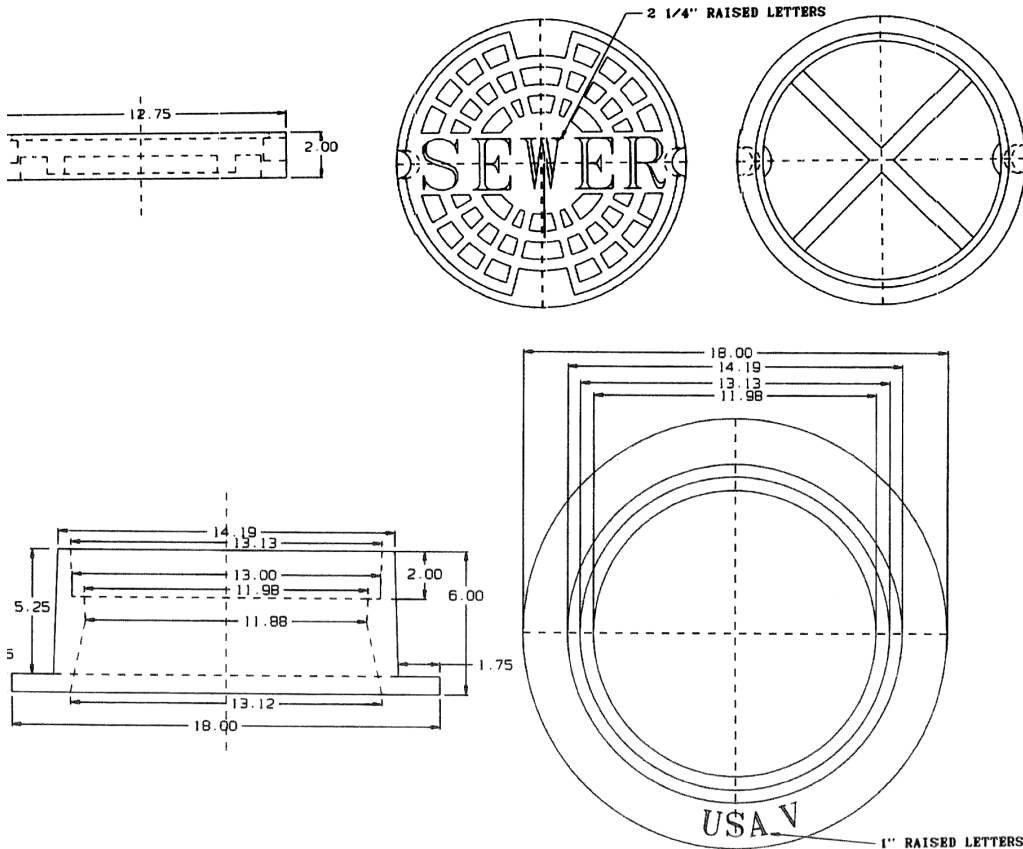




Sewer Cleanout Frame & Lids

Model No. LH-12

- Fits over 8" and 10" diameter pipe & fittings.
- Standard lid marked Sewer. Available with Water and Storm.
- Intended for concrete, asphalt, grass, or dirt installation.
- Total Weight - 110 lbs.
- Part Code Assembled 32-125
- Part Code Lid Only 32-127
- Part Code Frame Only 32-126

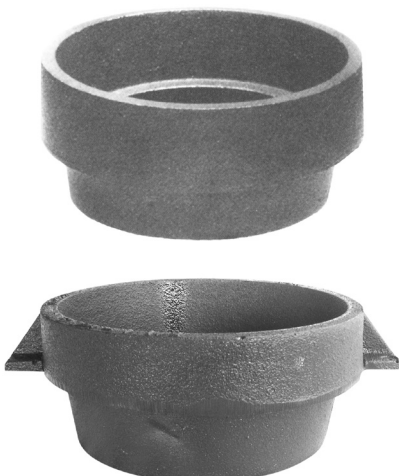




CAST IRON VALVE BOX LID*

Part Code	Model #	Description	Tile Size	Lid	Wt.
96-100	T-5 1/4	Skirted 5 1/4 Cover	5 1/4	7	12

* Cover can be marked with Water, Gas, Storm or Sewer.



CAST IRON VALVE BOX RISERS*

Part Code	Model #	Description	Tile Size	Lid	Wt.
96-375	71	1" Valve Box Riser Domestic	5 1/4	7	6
96-366	715	1 1/2" Valve Box Riser Domestic	5 1/4	7	10
96-376	72	2" Valve Box Riser Domestic	5 1/4	7	13
96-377	73	3" Valve Box Riser Domestic	5 1/4	7	15
96-378	74	4" Valve Box Riser Domestic	5 1/4	7	20
96-314	76	6" Valve Box Riser Domestic	5 1/4	7	29

* Risers available with or without flanges.



CAST IRON VALVE BOX "MUSHROOM" LID*

Vestal No.	Model #	Description	Tile Size	Lid	Wt.
96-145	V-6	Mushroom	6" or 4"	7.5"	13

* Drops into a 6" pipe or will accept 4" pipe on inside.



CAST IRON VALVE BOX RING*

Part Code	Model #	Description	Tile Size	Lid	Wt.
96-367	V-2194	5 1/4 Valve Box Ring	6	7	15

* Use with #7 cover.



CAST IRON VALVE BOX COVER*

Part Code	Model #	Description	Tile Size	Lid	Wt.
32-035	7	Standard 5 1/4 Drop-In	5 1/4	7	7

* Cover can be marked with Water, Gas or Sewer.

* Use with V-2194 Ring.



CAST IRON 5 1/4 VALVE BOX RING & COVER*

Part Code	Model #	Description	Tile Size	Lid	Wt.
96-001	525	5 1/4 Ring & Cover	6	7	17.5
96-098	5 1/4 COVER	5 1/4 Cover Only	N/A	7	9
96-099	5 1/4 RING	5 1/4 Ring Only	6	7	9

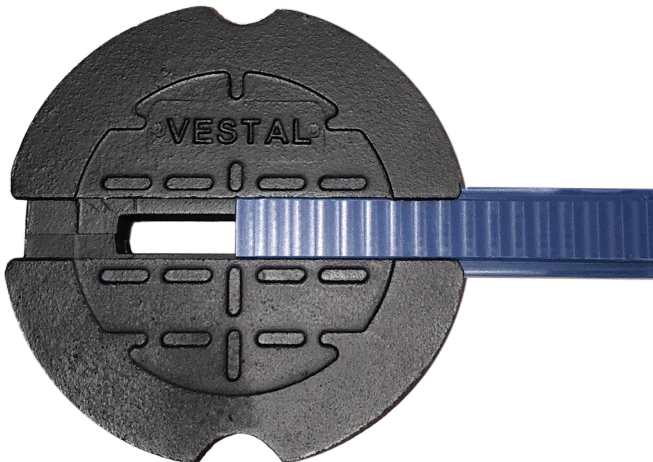
* Cover can be marked with Water, Gas or Sewer.



Water Leak Detection

Next Generation Valve Box Lids

- The longevity and durability of quality USA-made cast iron, matched with the signal enhancing benefits of composite plastic
- Sized for use in 5-1/4" valve box
- Designed to locate super antenna at apex of lid
- Plastic blue insert is installed or removed easily with pressure fit tightness



Vestal No.	Description	Box Size	Lid Size	Weight
96-110	Hybrid Valve Box Lid	5-1/4"	7-1/2"	17 lbs.
96-111	Blue Plastic Insert	-	-	<1 lb.



Vestal Manufacturing Enterprises, Inc.
 P.O. Box 420 • Sweetwater, TN 37874
 Phone: 800-456-9562 • Fax: 423-337-2003
www.vestalmfg.com





Vestal Manufacturing Enterprises, Inc. certifies that all Vestal Municipal Casting products are in full compliance with the **Build America Buy America Act (BABA)** and **American Iron & Steel (AIS)** requirements. Domestically poured and manufactured from our gray iron foundry in Sweetwater, Tennessee, Vestal products are “Crafted with Pride in the U.S.A.”

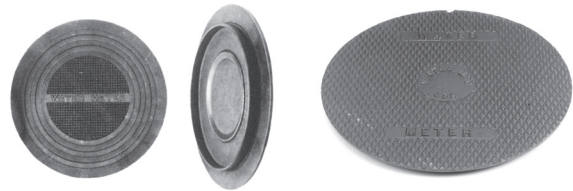
Meter Box Rings & Covers



Monitor Rings & Covers



Round Meter Pit Lids



Rectangular Lids



Cleanout Rins & Covers



Valve Box Risers & Lids



Cleanout Frames & Lids



Valve Box Rings & Lids



Specialty Castings

- City Names
- City Logos

Contact the Vestal sales office for submittal drawings, product questions or additional information.

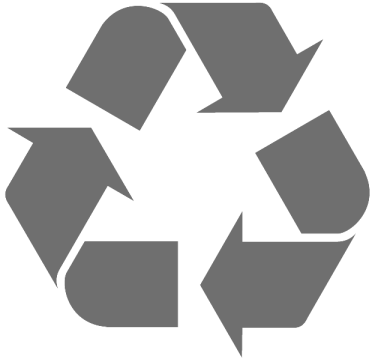


Vestal Manufacturing Enterprises, Inc.
 P.O. Box 420 • Sweetwater, TN 37874
 Phone: 800-456-9562 • Fax: 423-337-2003
www.vestalmfg.com





Be Green!



Environmentally Focused

- 100% of the iron used to make Vestal castings is **scrap metal**.
- Thousands of tons of **scrap metal**, that otherwise may be scattered across the country or dumped in landfills, are recycled annually.
- Approximately 96% of our green sand is **reclaimed** daily and reused in our molding process.
- Closed loop water system provides **reduced water** consumption by 20 million gallons of water annually.
- Energy **efficient lighting** in all Vestal office and manufacturing facilities.
- All excess cardboard is accumulated and sent to a recycling center.



VESTAL MANUFACTURING
Sweetwater, TN 37874
800-456-9562

TERMS AND GENERAL INFORMATION

TERMS:

Terms will be specified on each individual invoice. A service charge of 1 1/2% per month (18% ANNUAL RATE) will be assessed for all past due accounts. Where applicable, the service charge will be adjusted to meet state legal requirements.

PALLETIZING MATERIAL:

Certain Vestal products must be palletized for shipping at a net charge per pallet. There is also a net charge for heavy wooden shipping boxes. The boxes and pallets are not returnable.

DAMAGES, SHORTAGES OR LOSS IN TRANSIT:

Merchandise is inspected and counted before loading. Please inspect carefully on receipt of merchandise, noting any discrepancy or damage on the carrier's freight bill AT TIME OF DELIVERY.

Discrepancies or damage which obviously occurred in transit are the carrier's responsibility, and related claims should be made promptly, direct to the carrier. DEDUCTIONS FROM INVOICES FOR SHORTAGES OR DAMAGE CLAIMS WILL NOT BE ALLOWED.

Our responsibility as shipper ceases when goods are delivered in good order to the transportation company. We assume no liability for merchandise in transit. We will, however, render all possible assistance in recovering lost goods or in filing claims by consignee.

PRICES:

Subject to change without notice. All merchandise will be invoiced at prices in effect at time of shipment.

HANDLING CHARGE:

UPS shipments are assessed a \$4.00 charge per shipment. Quantities will be rounded up to the next even bundle unless specifically requested, then special charge will apply. A special \$5.00 handling charge will also be assessed on any product when quantity ordered is less than standard package.

RETURN GOODS:

Return goods will not be accepted without written authority from Vestal Manufacturing. A minimum charge of 20% will be made for handling, inspecting and repackaging items returned for credit. All returned goods must be shipped transportation charges prepaid. DEDUCTIONS FROM INVOICES FOR DAMAGES, DEFECTIVE, AND SHORTAGE CLAIMS WILL NOT BE ALLOWED.

TAXES:

Prices do not include sales, excise, transportation and other similar taxes present or future.

DELIVERY:

Shipments and deliveries are, at all times, subject to approval of our Credit Department. Delivery is contingent on floods, strikes, acts of God, or any other causes beyond our control.

MODEL NUMBER:

When placing orders, please give model number.

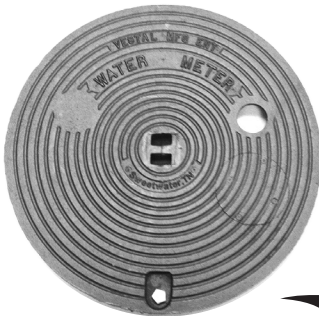
PLANT CLOSINGS:

Vestal Manufacturing always closes the weeks of July 4th and December 25th. No shipping, receiving, or production will occur during these times.

METER BOX RINGS & COVERS



Monitor Rings & Covers



Celebrating Over 80 Years of Excellence

Since
1946

Sewer Cleanouts



Yoke Bars



Flat Locking Covers



Valve Box Risers



Valve Boxes



For over 80 years Vestal Manufacturing has been producing gray iron castings using American labor, techniques and materials. Whatever your requirements, Vestal will work with you to produce high quality castings for your particular application.

VESTAL MANUFACTURING ENTERPRISES, INC.

P.O. Box 420 • Sweetwater, TN 37874
(423) 337-6125 • USA WATS 1-800-456-9562

Fax 423-337-2003

Email: vestal@vestalmfg.com

Website: www.vestalmfg.com

